



Code 20 Test and Evaluation Department  
June 2026

## **Naval Undersea Warfare Center Division, Keyport**

Libby Solomon, Department Head (Acting)

**Commanding Officer**  
Captain Brandon Monaghan

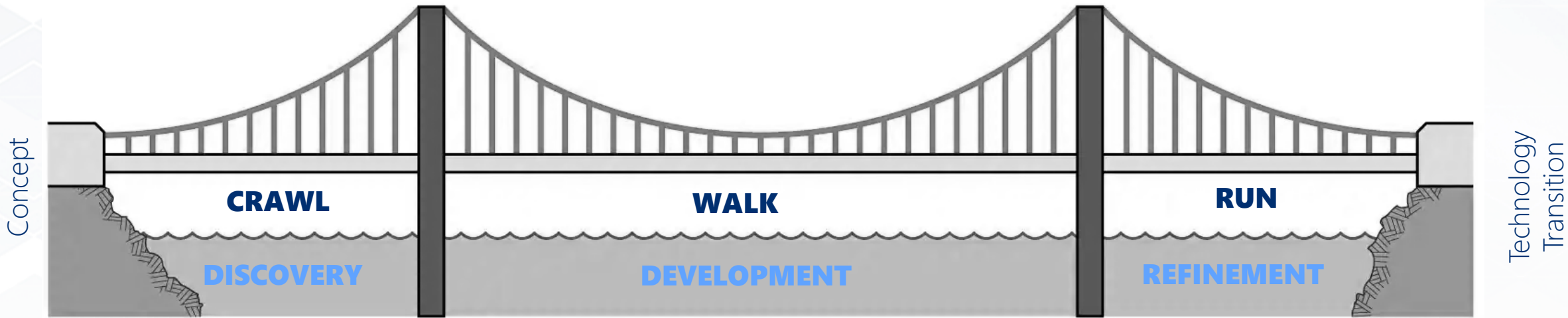
**Technical Director**  
John Kenney, SES

**Distribution Statement A.** Approved for public release: distribution is unlimited.



# Test and Evaluation (T&E)

**In-water and land-based T&E tailored to support the assessment and analysis of capability readiness**



# In-water T&E Capabilities

## Range Operations

- Launch
- Retrieval
- Recovery

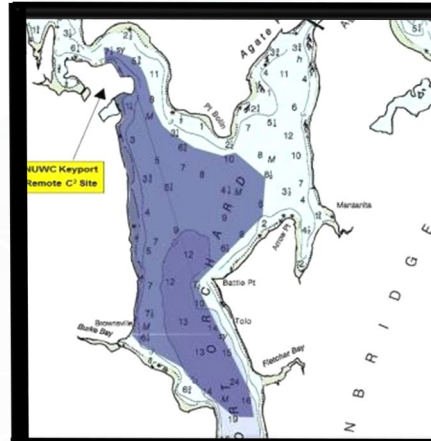


## Physical Test Support

- Communications
- Tracking
- Specialized Launch and Retrieval Equipment



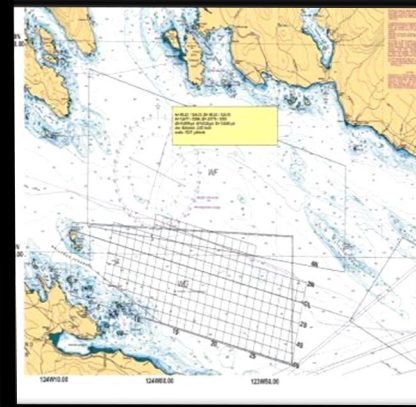
**Keyport Range**



**Dabob Range**



**CFMETR (Nanose)**

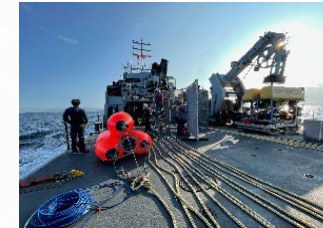


**Quinault Range**



## Test Design and Planning

- Test Planning
- Environmental Compliance
- Battery Certification



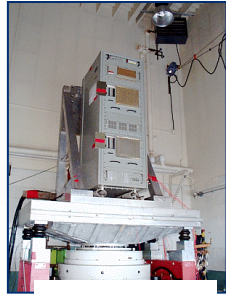
# Land-based T&E Capabilities



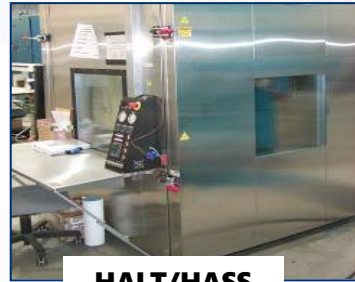
**Drop Shock System**



**3-Axis Rate Table**



**Vibration**



**HALT/HASS Chamber**

## Environmental Test Laboratory (ETL)



**WSTF**

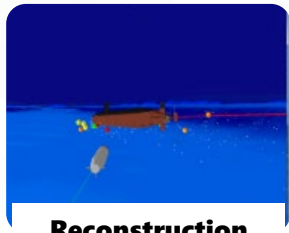


**TATF**



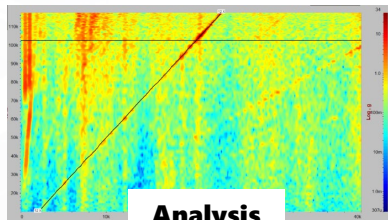
**ATF**

## Acoustic Test Capabilities

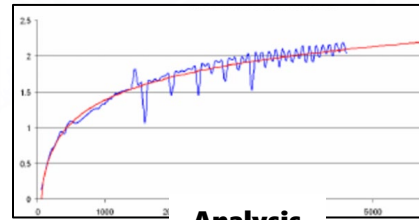


**Reconstruction**

## Systems Assessment



**Analysis**

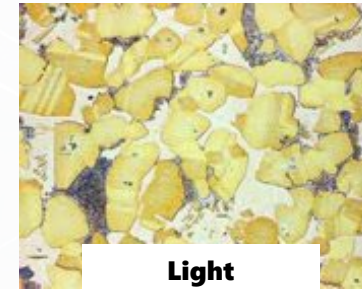


**Analysis**

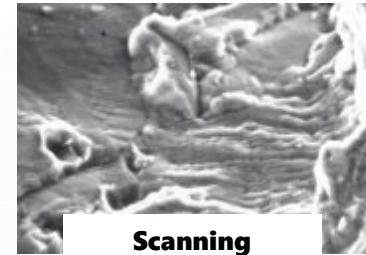
## Failure Analysis Laboratory (FAL)



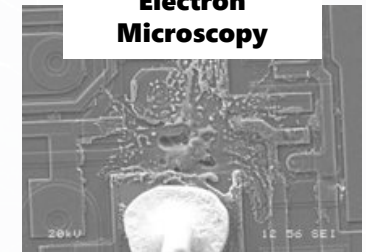
**Real-time X-ray**



**Light Microscopy**



**Scanning Electron Microscopy**





**Questions?**

[Kypt\\_pao@us.navy.mil](mailto:Kypt_pao@us.navy.mil)

**Distribution A**

